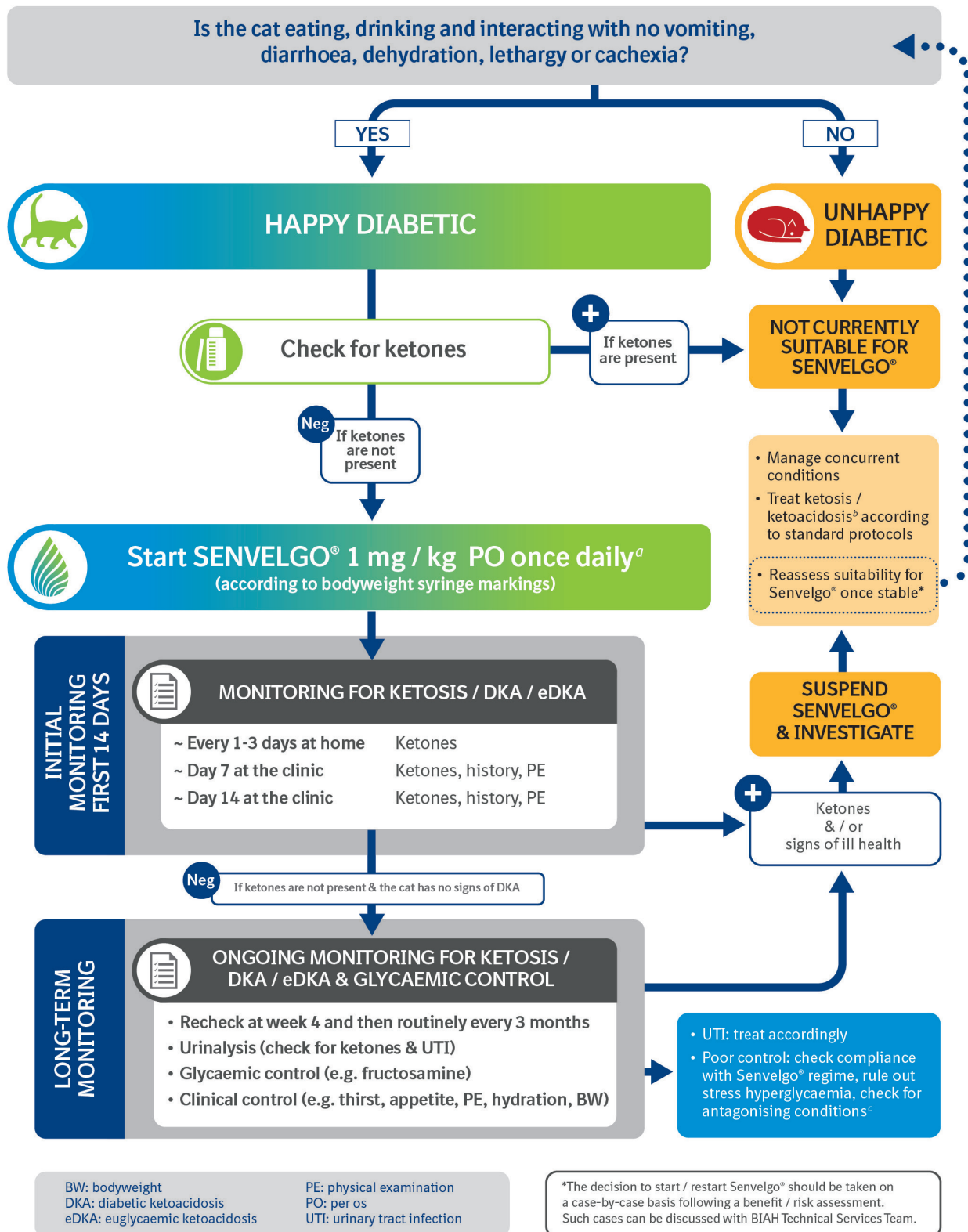


GUIDE FOR MANAGING

DIABETIC CATS WITH SENVELGO®



^a. Cats previously treated with insulin may be at higher risk for DKA and should be monitored closely when starting treatment. If transitioning from insulin, omit the insulin evening dose the day before starting Senvelgo® treatment. ^b. Soluble insulin and intravenous fluid therapy required to resolve ketoacidosis (supplement with glucose/dextrose if blood glucose <15 mmol/l). ^c. A small proportion of cats may not respond adequately to Senvelgo® treatment due to true insulin deficiency, so long-term treatment with insulin may be required in these cases.